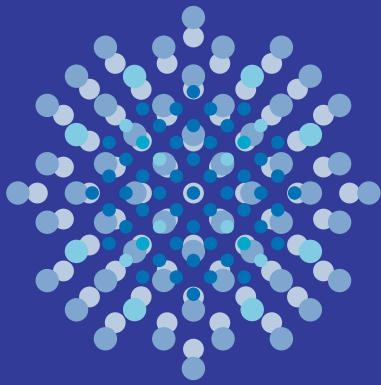


Shalea



*Commercial use mixed-air low flow showerhead
(Shalea wall mount type)*



Swan

Straight



TKS

TANAKA METAL FACTORY CO.,LTD.

Shalea «Commercial use low flow showerhead»



The mixed-jet system is a new type of water-saving showerhead that uses water power to suck up air and mix it into the water stream

Cut water use by 33%

Without compromising water flow!

save water

Low flow specifications that are good for the environment

Reduce water usage by up to 50% (compared to traditional showerheads)

See below for details

dynamic

Achieve a forceful flow using the power of air

Showerhead jets recreate the dynamic feeling of a rushing waterfall. Achieve comfortable flow even in areas with low water pressure by using the power of air and the appropriate adapter.

relax

Experience the softness of water infused with air

Just the right amount of air creates a rhythmic feel that adds softness and gentleness to the water stream, massaging your hair and skin.

Four key features

- 1: Reduced cost
- 2: Full water pressure
- 3: Massage and relaxation
- 4: Maintenance free

Water saving features

Water usage comparison per shower or faucet

	Weekday	Weekend
Before installation	0.110m ³	0.082m ³
After installation	0.070m ³	0.061m ³
Reduction	36.4%	25.6%

(Data collected from bathing facilities used by 1300 people per day)

Average water savings of 33%

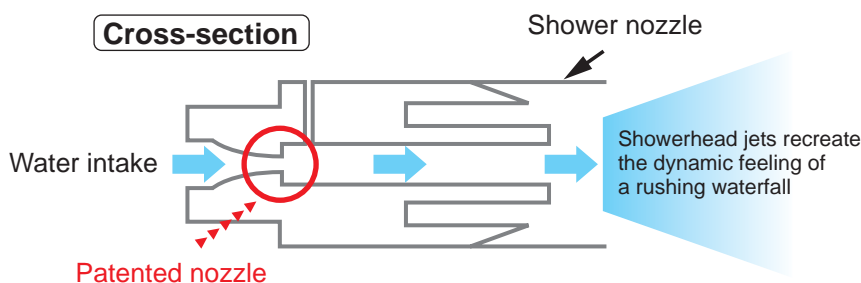


Costs reduced by
about **250,000 yen**
per month

Great news for facilities using wall-mount showerheads

Even those who have been dissatisfied with water-saving stem have been satisfied with the Shalea. Drawbacks with previous water-saving methods included weak flow from stem with holes or other devices.

The wall-mount Shalea creates brisk water flow using the power of air.



Please note before purchasing

Note

Water flow strength may be compromised in areas with extremely low water pressure. Certain locations may experience reduced water saving effectiveness.

Installation

Exchange with showerhead currently in use (simple construction)

Usage requirements

Water pressure	0.07MPa(0.7kgf/cm ²) ~ 0.75MPa(7.6kgf/cm ²)
Maximum temperature	60°C

Product specifications

Product name	MJP Wall Shower Shalea
Product number	TK-SH01SW (Swan Type) TK-SH-01ST (Straight Type)
Weight	About 750g (Swan Type) About 420g (Straight Type)
Materials	Resin material / ABS resin, polyacetal resin Metallic material / stainless steel, brass (plated) Rubber material / EPDM, NBR

R&D / sales / manufacturing

TKS

TANAKA METAL FACTORY CO.,LTD.

URL <http://www.tanakakinzoku.com/>

TEL 0581-53-2653

E-mail tkst@tanakakinzoku.com

Business hours: 10am-12pm, 1pm-5pm (excludes Sundays, holidays, and winter and summer breaks)

Distributor

Note: Product specifications and prices are subject to change without notice.