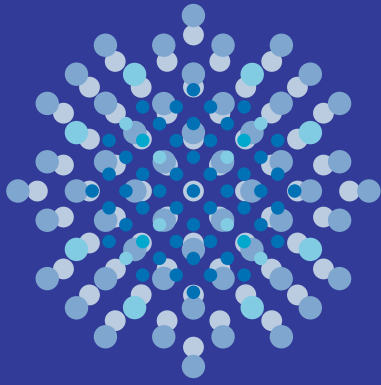


# AriaMisto

*Introducing the AriaMisto mixed-jet low flow showerhead*

---



Cuts water  
usage by  
**up to 50%**  
while increasing  
cleaning power



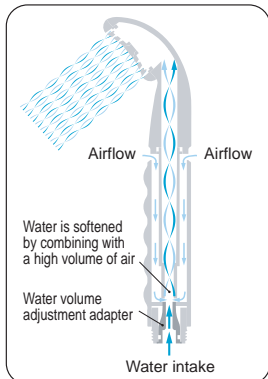
**TKS**

TANAKA METAL FACTORY CO.,LTD.

design by TAKASHI IFUJI

## Dynamic

The mixed-jet shower nozzle (Patent No. 3747323) infuses a high volume of air into the water stream at high speed in the form of tiny bubbles, increasing the overall volume of the mixture before shooting it out. This creates a unique feeling on the skin, like standing under a natural waterfall.



How the AriaMisto works



Water droplets shooting from the AriaMisto (clear plastic head casing shown)

## Relax

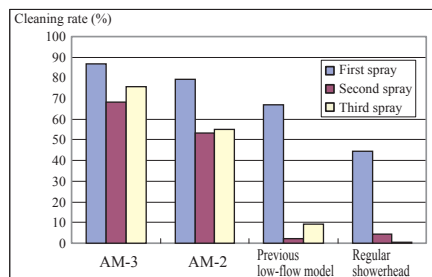
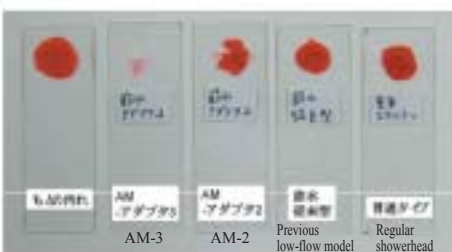
Unlike traditional showerheads, the mixed-jet system creates a water flow made up of a continuous stream of water droplets for a comfortable, rhythmic feel that invigorates as it thoroughly cleans the skin and pores.

## Cleaning power

### The AriaMisto system maintains cleaning power in tests

The brisk water flow infused with air bubbles is a powerful cleaning agent. This was tested by affixing an artificial substance on slides mimicking the dirt and oil on human skin and using the shower without any soap or cleaner to remove it. The results in the graph below show the superior cleaning power of the AriaMisto. The cleaning rate refers to the percentage of dirt and oil washed away by the shower.

(Yokohama National University Oya Lab study)

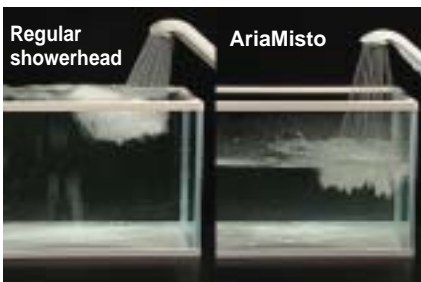


## SaveWater

The mixed-jet system reduced water usage by up to 50% for showers that are both comfortable and economical. A family of four can save around 60,480 liters of water a year. Of course, the reduction in water volume also saves on water heating costs (e.g. gas, electric, kerosene, or heating oil), making the AriaMisto a smart choice for the environment as well.

## Water tank comparison test

After one minute



## Water- and energy-saving results

For a family of four each taking one seven-minute shower per day

	Per day	Per year
Regular showerhead water usage	Approx. 336L	Approx. 120,960L
AriaMisto	Approx. 168L	Approx. 60,480L

You save!

Approx. **60 yen / day** | Approx. **20,000 yen / year**

Reduce CO<sub>2</sub> emissions by about **300kg** per year  
(amount processed by 21 cedar trees in 50 years)

## Comes in three different colors!



Orange: TK-1001-WO

Green: TK-1001-WH

Gray: TK-1001-WG

## Please note before purchasing

### Note

Water flow strength may be compromised in areas with extremely low water pressure  
Certain locations and shower setups may reduce water saving effectiveness

### Installation

Installation method may differ depending on the type of shower hose currently in use

### Compatible with shower hoses by the following manufacturers:

TOTO, INAX, SAN-EI, KAKUDAI, MYM\*, KVK\*, GASTAR\*

\*Adapter required

## Usage requirements

Water pressure	0.07MPa(0.7kgf/cm <sup>2</sup> ) ~ 0.75MPa(7.6kgf/cm <sup>2</sup> )
Maximum temperature	60°C

## Product specifications

Product name	AriaMisto Showerhead
Product number	TK-1001
Included in package	Showerhead, 3 hose adapters, 3 water flow adjustment adapters Warranty information and user's manual
Size	W 46mm x D 52mm x H 194mm
Weight	150g
Materials	Resin material / ABS resin, polyacetal resin Metallic material / stainless steel, brass (plating process) Rubber material / EPDM, NBR

## R&D / sales / manufacturing

**TKS**

**TANAKA METAL FACTORY CO.,LTD.**

URL <http://www.tanakakinzoku.com/>

TEL 0581-53-2653

E-mail [tkst@tanakakinzoku.com](mailto:tkst@tanakakinzoku.com)

Business hours: 10am–12pm, 1pm–5pm  
(excludes Sundays, holidays, and winter and summer breaks)

Distributor
-------------

Note: Product specifications and prices are subject to change without notice.